

PD SP
800 i+

**SUPERIAL 800 i+
PANEL DOOR**



Thermally insulated aluminium system designed for the design of single-leaf panel door.

PD SP 800 i+

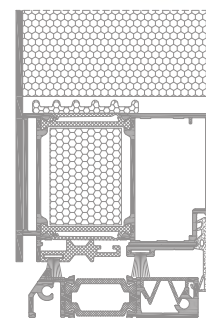
Thermally insulated aluminium system designed for the design of single-leaf panel doors.

SP 800 i+ panel door system is a solution based on the SP 800 i+ door system; it is characterized by very good thermal insulation and new sealing solutions.

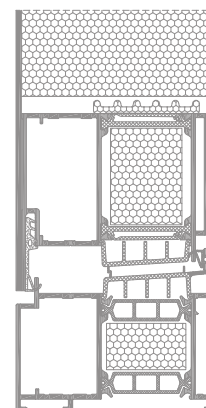
The system is compatible with the SUPERIAL system. The door leaf is adapted to the most common panel glued on both sides.

The filling panels are available in various designs and colours. The techniques for the milling of different shapes, making decorative applications and putting in glass units used in their production provide an endless number of combinations and variants.

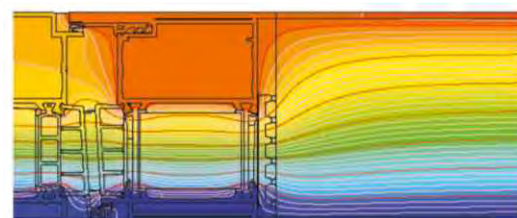
Wide range of colours – RAL palette (Qualicoat 1518), texture colours, Aliplast Wood Colour Effect (wood-like colours), Aliplast Loft View – colours imitating stone surfaces (Qualideco PL-0001), anodized colour (Qualanod 1808), bi-colour.



PD SP 800 i+ door section



PD SP 800 i+ door section



distribution of isotherms for frame with sash composition in door system in PD SP 800 i+ (SP815 +SP1826)



TECHNICAL SPECIFICATION

SYSTEM	MATERIAL	DEPTH OF FRAME	DEPTH OF LEAF	GLAZING RANGE	MAXIMUM WINDOW SIZES	MAXIMUM DOOR SIZES
PD SP 800 i+	aluminium / polyamid	75 mm	75,5 mm	75 mm	—————	single-leaf door 1300 x 2800 mm

PERFORMANCE

SYSTEM	THERMAL INSULATION Uf *	AIR PERMEABILITY	WINDLOAD RESISTANCE	WATERTIGHTNESS
PD SP 800 i+	Uf from 1,60 W/m ² K	Class 4; EN 12207	C5 (2000 Pa); EN 12210	8A (450 Pa); EN 12208

* Thermal insulation is dependent on a combination of profiles and thickness of the filling.