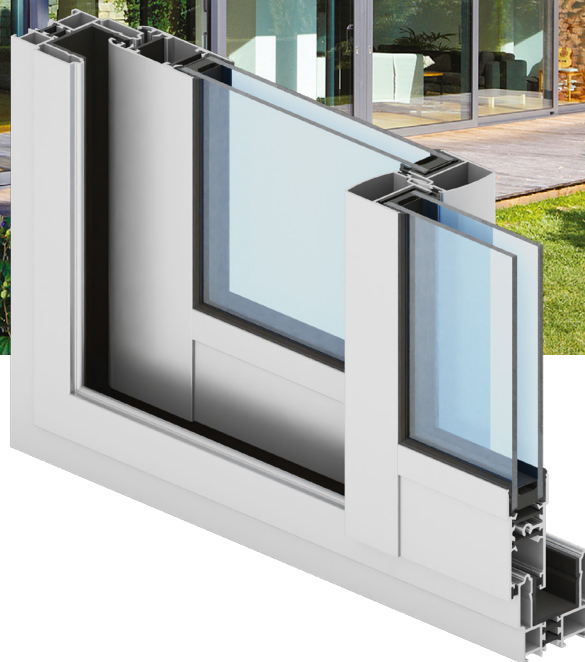




sliding system



## Slide Plus

- a system with thermal insulation used to design sliding doors
- the system is characterised by no glazing strips; infills are installed at the leaf installation stage in leaf C-shaped rabbets without glazing strips, with a seal which surrounds the infill
- the frames are available in two versions: with an extruded slide rail and a separate profile for travelling trolleys (mounted at the lower sections of the leaves)
- vertical leaf profiles have a profiled grip along the entire leaf height; the grips also provide static reinforcement of the structure
- there is possibility of use Flyscreen system and Insect System (fly screens are a practical and an extremely functional protection against insects)
- a wide range of colours – RAL palette (Qualicoat 1518), texture colours, Aliplast Wood Colour Effect (wood-like colours), Aliplast Loft View – colours imitating stone surfaces (Qualideco PL-0001), anodised colour (Qualanod 1808), bi-colour

## sliding system

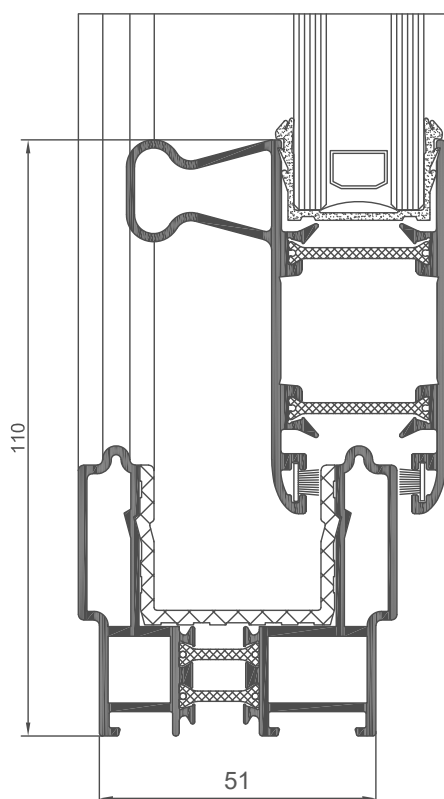
### technical specification

system	material	depth of frame	depth of leaf	glazing range	weight of leaf	type of doors
SL+	aluminium / polyamid	59-103 mm	32 mm	6 - 9 mm / 20-24 mm	to 120 kg	sliding

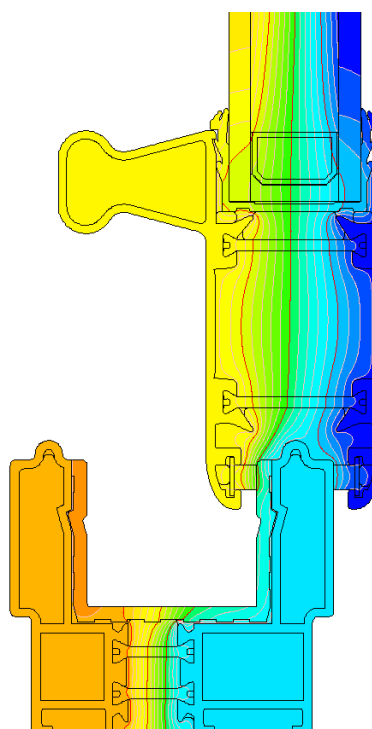
### performance

system	thermal insulation $U_f^*$	air permeability	windload resistance	watertightness
SL+	Uf from 3,63 W/m <sup>2</sup> K	Class 3; EN 12207	Class B3 (1200 Pa); EN 12210	Class 5A (200 Pa); EN 12208

\* Thermal insulation is dependent on a combination of profiles and thickness of the filling.



Slide Plus cross section through the connection frame and sash (SL010 + SL1120)



distribution of isotherms for frame with sash composition in Slide Plus system (SL010 + SL1120)